



Nikon Coolpix S9050 LCD Screen Replacement

This guide will allow owners of the Nikon Coolpix S9050 to replace the LCD screen.

Written By: Paige Kloetzer



INTRODUCTION

The Coolpix S9050 was introduced in 2012 and discontinued in 2013



TOOLS:

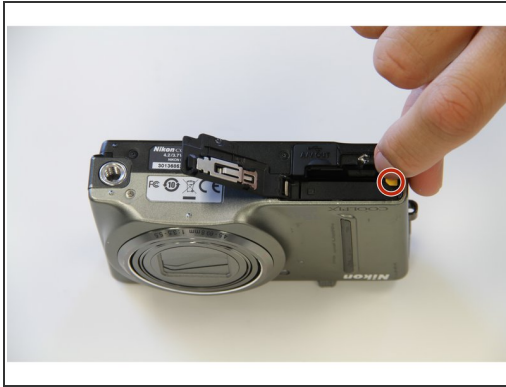
- [Phillips #00 Screwdriver](#) (1)
- [iFixit Opening Tools](#) (1)



PARTS:

- [Nikon Coolpix S9050 LCD screen](#) (1)

Step 1 — LCD Screen Replacement



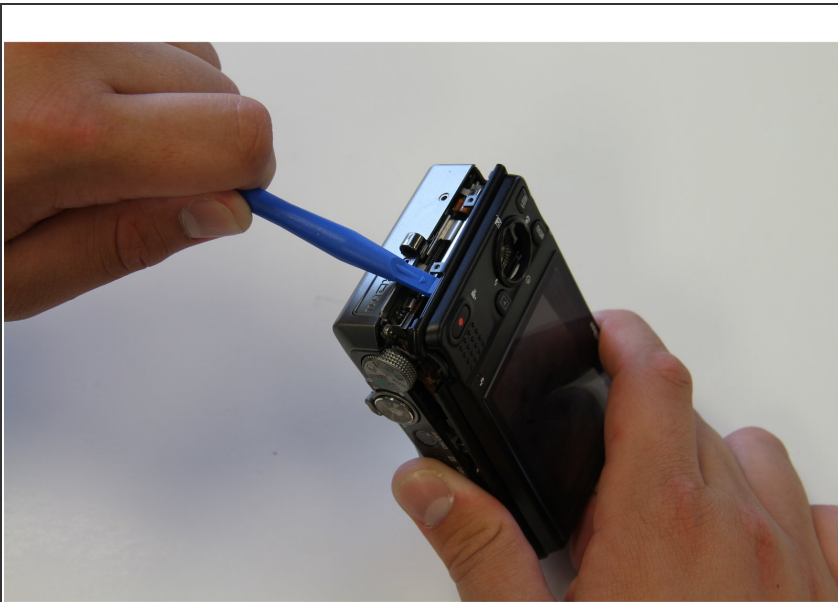
- Flip the camera upside down.
- Slide the locking mechanism to the left.
- Push yellow holding pin upward until battery pops up.
- Pull out battery.

Step 2




- Tools Required: PH00 screwdriver
- Remove the two screws on the left side of the camera.
- Remove the two screws on the right side of the camera.
- Remove the four screws from the bottom of the camera.
- Remove the screw that is located on the inside of the battery chamber.

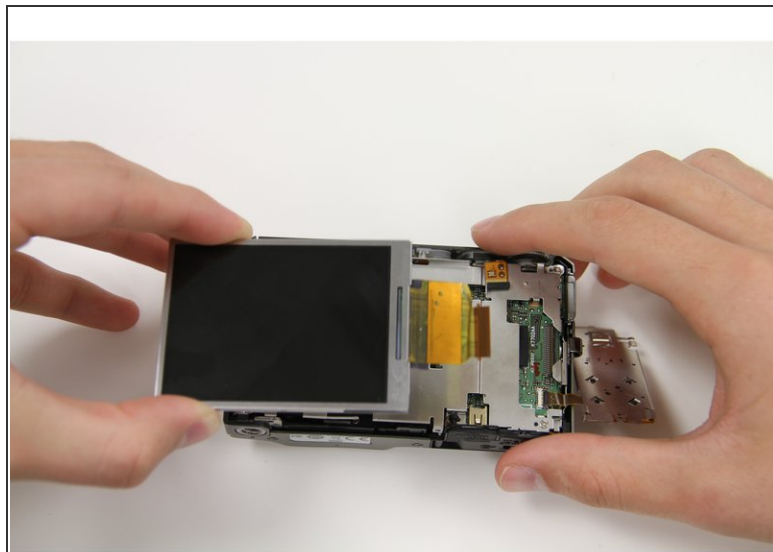
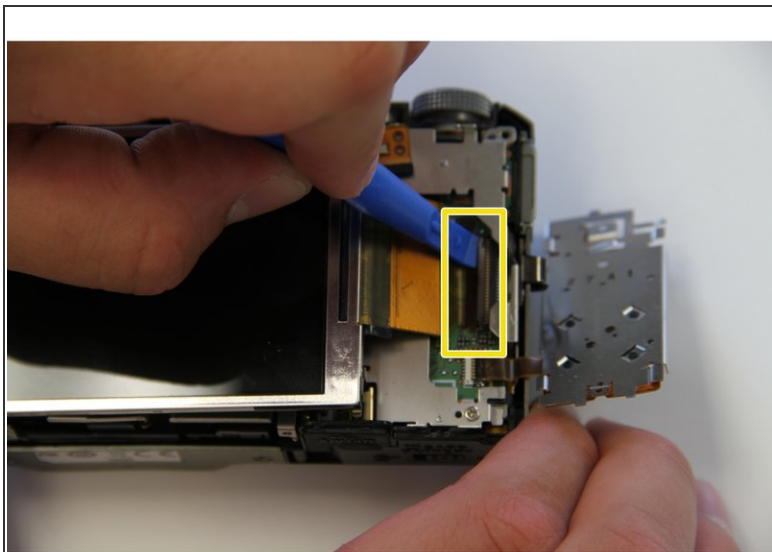
Step 3



- Use a blue pry tool and separate the black back plate from the camera.
- Once the black plate is separated, carefully pull apart the back plate from the front half of the camera.

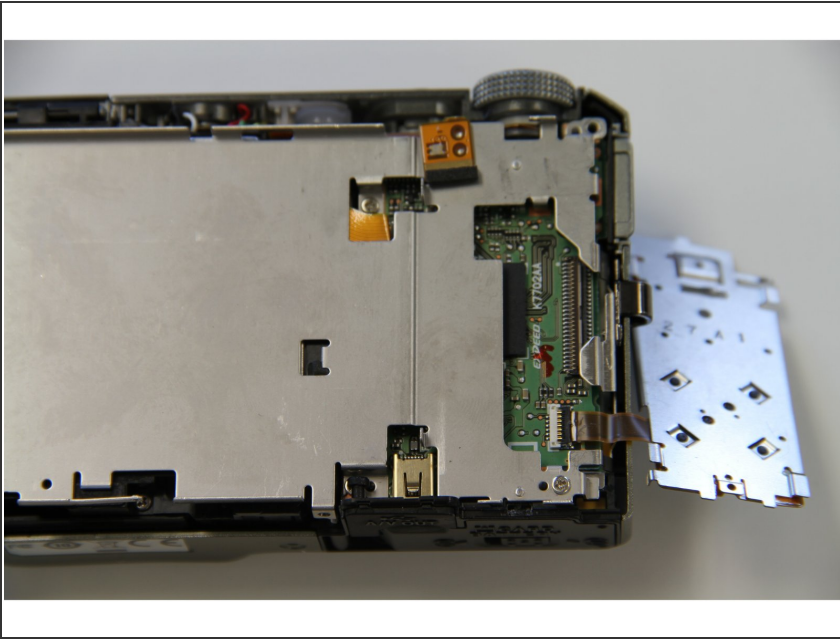
 Make sure all four sides of the back casing are pried from the camera before completely pulling it apart. If not pulled off evenly plastic placement tabs may break.

Step 4



- Take the blue pry tool and lift the brown latch on the ZIF connector that holds the screen tab in place.
- Once the brown latch on the ZIF connector is lifted upward, carefully lift the screen and pull away from the camera.
- The screen and screen tab will detach from the motherboard.

Step 5



- Take the new screen and slide the tab in to the ZIF connector that the previous screen was plugged in to.
- Close the brown latch on the ZIF connector and fit the screen in the original slot.
- Return the dial flap to its original position.

Follow the steps in reverse order to put the camera back together.